



CITY OF ELK GROVE TRAILS COMMITTEE

Mark Mendenhall, Chair
Sharon Anderson, Vice Chair
Mark Doty • Sheri Noblett • Erika Smith



Incorporated July 1, 2000

Web: www.elkgrovecity.org

REGULAR MEETING MONDAY, NOVEMBER 15, 2021 AT 6:00 P.M.

Consistent with State Law while the State of Emergency remains active, this meeting will be conducted by teleconference only.

Members of the public who wish to participate in the meeting will need to join the Zoom meeting by registering at:

https://us06web.zoom.us/webinar/register/WN_MU8ITVSQQ7qk3rD0YP5iYw

Each individual who wishes to participate in the meeting must register separately. During the meeting, members of the public may provide comments using the "raise hand" feature in Zoom on a computer or mobile device. The raised hand lets the presiding chair know you have a comment.

AGENDA

1. CALL TO ORDER/ ROLL CALL

2. APPROVAL OF AGENDA

3. PUBLIC COMMENT

Members of the public may comment on matters that are not included on the agenda that the Trails Committee has jurisdiction over. Each speaker will be limited to one (1) three (3) minute comment opportunity.

4. APPROVAL OF MINUTES

4.1 REGULAR MEETING MINUTES OF OCTOBER 18, 2021

5. DEVELOPMENT PROJECTS/CAPITAL IMPROVEMENT PROJECT REVIEW

The Trails Committee will review and provide input to staff regarding design features of projects as it pertains to the City's Bicycle, Pedestrian and Trails Master Plan.

5.1 **GRANT LINE CONSTRUCTION AGGREGATE PRODUCTION & RECYCLING FACILITY (PLNG21-001):**

The proposed Project, located at 10000 Waterman Road (APN: 134-0181-042), consists of a new construction aggregate materials production and recycling facility to produce asphalt and ready-mix concrete. The facility also includes industrial equipment and office spaces. As depicted in Figures 12, 13, and 14 of the 2021 updated City of Elk Grove's Bicycle, Pedestrian and Trails Master Plan (BPTMP), a Class II Bicycle Lane is in progress along Waterman Road on the eastern side of the property near the entrance of the Project site heading north and south on Waterman Road.

Recommendation: Review the proposed project and provide feedback to staff.

5.2 **SHELDON AND WATERMAN TENTATIVE SUBDIVISION MAP**

The proposed Project, located at 9350 Sheldon Road (APN: 127-0010-077), consists of a Tentative Subdivision Map to divide one existing 115-acre parcel into twenty-six 2-acre lots with a 50-acre open space remainder lot. As depicted in Figures 12, 13 and 14 of the 2021 updated City of Elk Grove's Bicycle, Pedestrian and Trails Master Plan (BPTMP), a Class I multi-use trail is proposed to run through the property along the western side, heading south on the Project site (APN: 127-0010-077). An at-grade crossing for the Class I trail is proposed at Sheldon Road. In addition, Class II bike routes is proposed to run along the west side of the Project site on Waterman Road and the south side of Sheldon Road.

Recommendation: Review the project and provide feedback to staff.

6. PROJECT UPDATES, INFORMATIONAL ITEMS AND PRESENTATIONS

6.1 BIKE MAP UPDATE

As part of the update to the Bicycle, Pedestrian, and Trails Master Plan adopted in 2021, the map has been updated to reflect current conditions and priorities. The Map is useful to pedestrians and cyclists to identify current locations of off-street trails and bikeways to navigate the City. In addition, it identifies points of interest, and provides information on trail etiquette and bike safety. The draft Map was brought to the Trails Committee on July 19, 2021 for initial review and input and is brought back to the Committee for final input.

Recommendation: Review the bike map update and provide final feedback to staff.

7. TRAILS COMMITTEE MATTERS/FUTURE AGENDA ITEMS

Trails Committee business/comments and/or opportunity to requests to staff for future agenda items.

8. ADJOURNMENT

ADA COMPLIANCE STATEMENT

In compliance with the Americans with Disabilities Act, if you need special assistance to participate in this meeting, please contact the Secretary at (916) 478-3620 / TTY 888-435-6092. Notification 48 hours prior to the meeting will enable the City to make reasonable arrangements to ensure accessibility to this meeting.

GOVERNMENT CODE SECTION 54957.5

Public records, including writings relating to an agenda item for open session of a regular meeting distributed less than 72 hours prior to the meeting, are available for public inspection at the Development Services Department, 8401 Laguna Palms Way, Elk Grove, CA

Information on the Elk Grove Trails Committee is available on the internet at

http://www.elkgrovecity.org/city_hall/city_government/commission_and_committees/trails_committee

**REGULAR MEETING MINUTES
MONDAY, OCTOBER 18, 2021**

The meeting was called to order by the Chair at 6:03 p.m. with the following participants:

Trails Committee Members Present: Chair Mark Mendenhall, Vice Chair Sharon Anderson, and Committee Members, Mark Doty and Sheri Noblett
Trails Committee Members Absent: Erika Smith
Staff/Advisory Members: Sandy Kyles, Planning Secretary
Sarah Kirchgessner, Senior Planner

APPROVAL OF AGENDA

MOTION: M/S Noblett/Doty to approve the agenda as presented. **The motion passed by the following vote: Ayes: 4 (Anderson, Doty, Mendenhall, Noblett); Noes: 0; Absent: 1 (Smith).**

PUBLIC COMMENT

Members of the Committee welcomed new member Sheri Noblett to the Trails Committee, who then introduced herself and talked briefly about her walking and biking activities.

Committee Member Anderson announced an upcoming Walking Tour of the Laguna Creek Inter-Regional Trail on Sunday, October 24, 2021, and she summarized the event/discussions of the Wednesday, October 13, 2021 Special Meeting Bike Ride-Along with City Staff Members, and a few members of the public.

APPROVAL OF MINUTES

MOTION: M/S Anderson/Doty to approve the Minutes of the Regular Meeting of July 19, 2021, and the Special Meeting of October 13, 2021, as presented. **The motion passed by the following vote: Ayes: 3 (Anderson, Doty, Mendenhall); Noes: 0; Abstained: 1 (Noblett)**

DEVELOPMENT/CAPITAL IMPROVEMENT PROJECT REVIEW

ITEM 6.1 - STATHOS SELF STORAGE (PLNG21-053): The proposed Project located on two vacant parcels totaling 8.55 acres on the north side of Elk Grove Boulevard between Bruceville Road and Foulks Ranch Drive (APNs: 116-0061-042 and 116-0061-010) consists of a new, ± 159,106 square-foot personal storage facility and associated site improvements. The Project includes a Modification to the City's Bicycle, Pedestrian, and Trails Master Plan. A Class 1 multi-use trail is proposed to run north-south through the Project site from Elk Grove Boulevard to Kilconnell Drive. The Project proposes to provide a 14-foot-wide Class 1 multi-use path within the Project's 25-foot building setback and landscape area to provide a connection from Elk Grove Boulevard to Tarbert Drive east of the Carlton Senior Living

Project Planner Sarah Kirchgessner presented an overview of the Project and described the proposed path.

In order to provide trail connectivity, the Committee felt the trail should not end in the project's parking lot but rather continue all the way north to Kilconnell Drive and suggested the City contact the Good Shepherd Catholic Church to entertain the possibility for the trail to go through their property. Ms. Kirchgessner recalled that the Church had rejected a similar request in 2014, however, the Committee

considered it necessary to connect with them again. Other options discussed included locating the trail on the west side of the parcel along the trees and continuing through a small area of the Church site straight to Kilconnell Drive or either by routing west to Racquet Court or east to Fox Cliff Way.

Applicant Ryan Smith agreed with the recommendations and offered to participate in the discussions with the Church.

The Trails Committee voted 4-0 to a motion, made by Mark Mendenhall/seconded by Sheri Noblett, to reach out the Catholic Church with the proposal as discussed.

PROJECT UPDATES, INFORMATIONAL ITEMS, AND PRESENTATIONS

Both Mark Mendenhall and Mark Doty announced their 10+ years of service on the Trails Committee, to which staff and the remaining committee members congratulated them.

FUTURE AGENDA ITEMS

None.

ADJOURNMENT

There being no further business before the Elk Grove Trails Committee, the meeting was adjourned at 7:14 p.m.

Prepared by Secretary, Sandy Kyles

APPROVED:

AGENDA ITEM NO. 5.1



TRAILS COMMITTEE STAFF REPORT November 15, 2021



PROJECT: GRANT LINE CONSTRUCTION AGGREGATE PRODUCTION & RECYCLING FACILITY

FILE: PLNG21-001

LOCATION: 10000 Waterman Road; APN: 134-0181-042

STAFF: Kyra Killingsworth, Senior Planner

INTRODUCTION / BACKGROUND:

The Project consists of a Conditional Use Permit and a Minor Design Review to construct a new construction aggregate materials production and recycling facility to produce asphalt and ready-mix concrete. The facility also includes industrial equipment and office spaces. As depicted in Figures 12, 13, and 14 of the 2021 updated City of Elk Grove's Bicycle, Pedestrian and Trails Master Plan (BPTMP), a Class II Bicycle Lane is in progress along Waterman Road on the eastern side of the property near the entrance of the Project site (APN: 134-0181-042) heading north and south on Waterman Road (see Figure 1 and 2).

The Project Applicant proposes no change to the BPTMP proposed Class II Bike Lane on the eastern side of the property along Waterman Road. The Bike Lane will comply with the City of Elk Grove Department of Public Works 2020 improvement standards.

STAFF RECOMMENDATION:

City Staff would like feedback from the Trails Committee on the Applicant's proposed development as it pertains to implementing the City's bicycle and trails requirements.

Figure 1 – Trails Master Plan Context Map

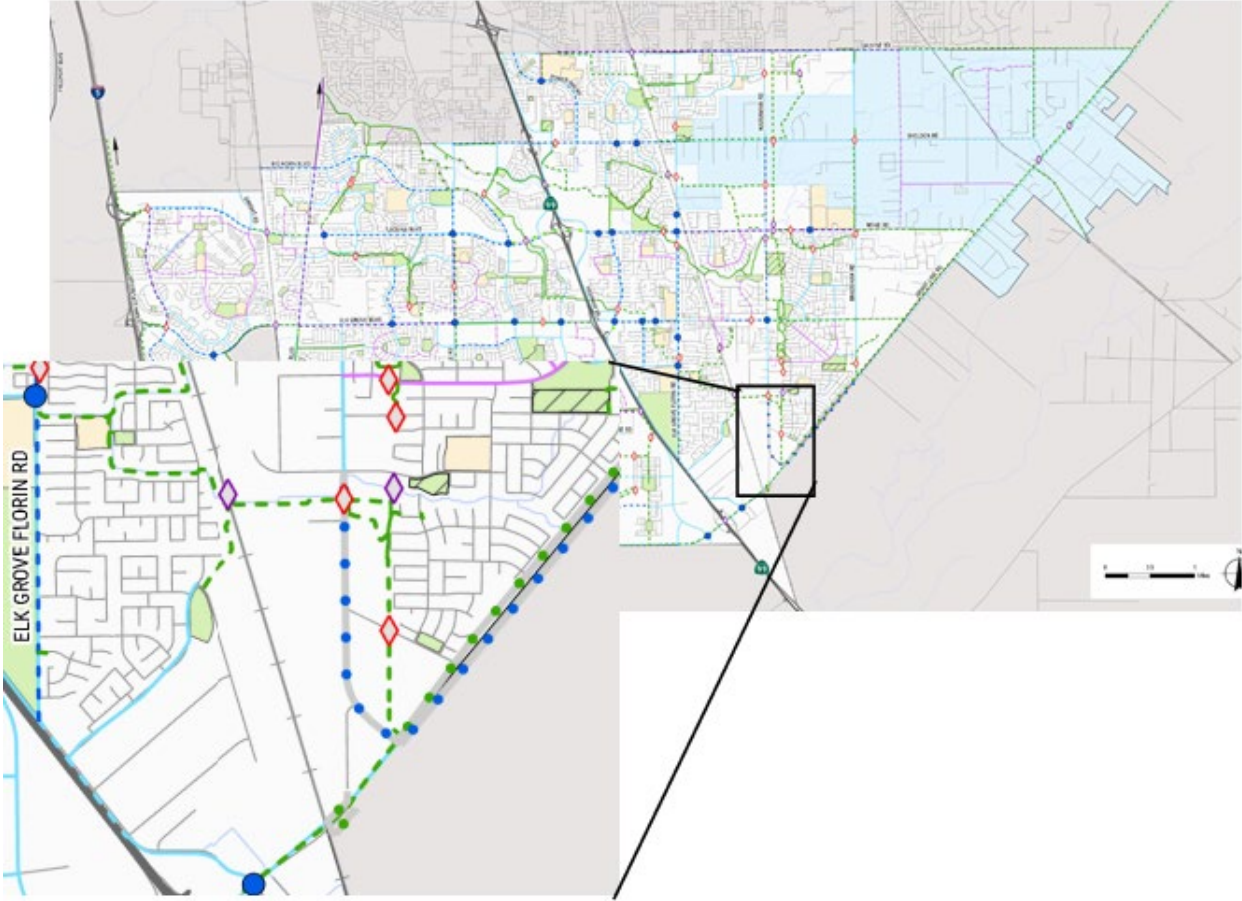
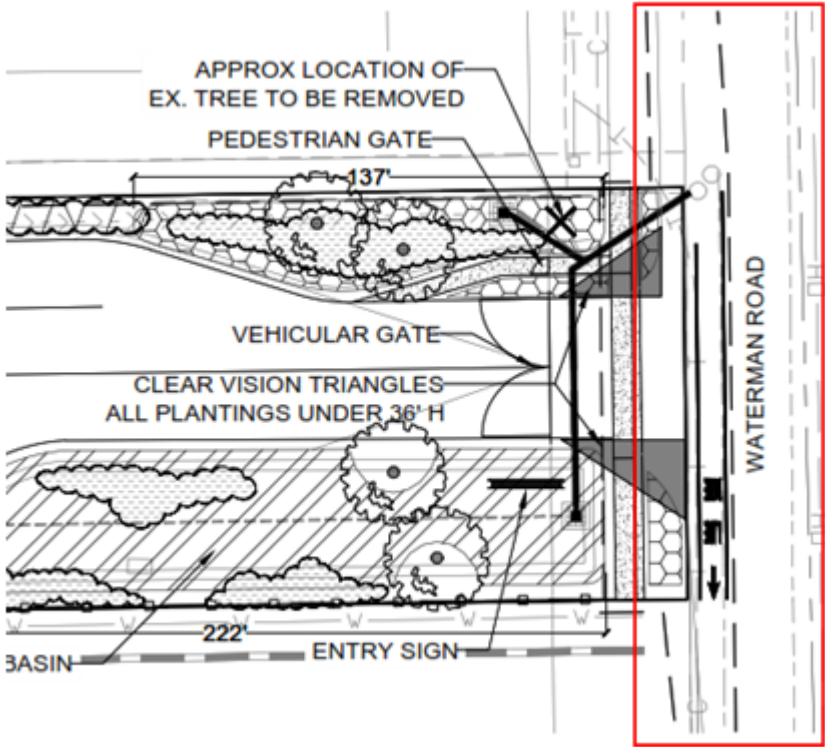


Figure 2 - Project Site/Bike Lane



AGENDA ITEM NO. 5.2



TRAILS COMMITTEE STAFF REPORT November 15, 2021



PROJECT: SHELDON AND WATERMAN TENTATIVE SUBDIVISION MAP
FILE: PLNG21-064
LOCATION: 9350 Sheldon Road; APNs: 127-0010-077
STAFF: Kyra Killingsworth, Senior Planner

INTRODUCTION / BACKGROUND:

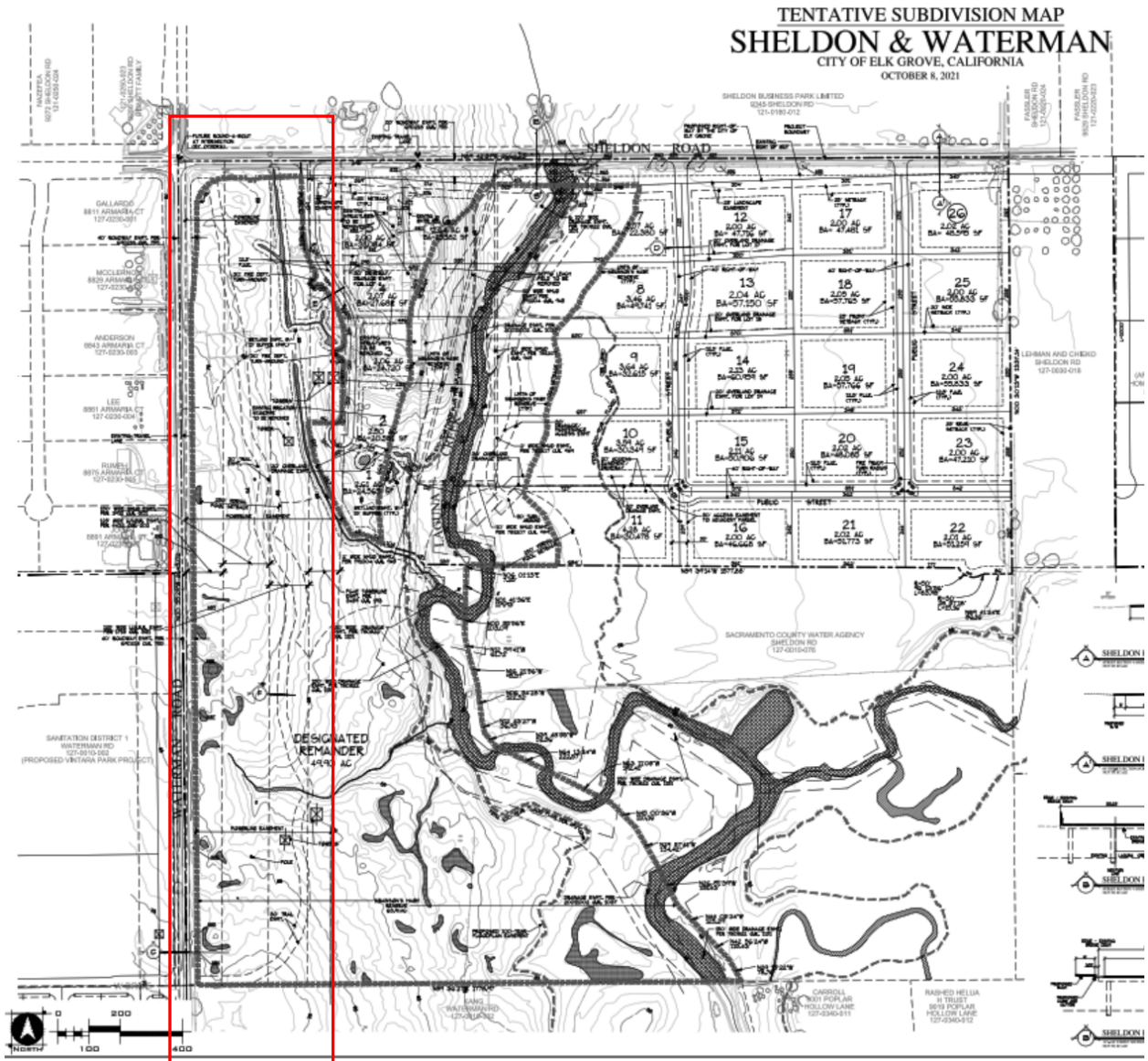
The Project consists of a Tentative Subdivision Map to divide one existing 115-acre parcel into twenty-six 2-acre lots with a 50-acre open space remainder lot. As depicted in Figures 12, 13 and 14 of the 2021 updated City of Elk Grove's Bicycle, Pedestrian and Trails Master Plan (BPTMP), a Class I multi-use trail is proposed to run through the property along the western side, heading south on the Project site (APN: 127-0010-077). An at-grade crossing for the Class I trail is proposed at Sheldon Road. In addition, Class II bike routes is proposed to run along the west side of the Project site on Waterman Road and the south side of Sheldon Road (see Figure 1 and 2).

The Project Applicant proposes no change to the BPTMP proposed Class I multi-use trail or the Class II bike routes on or near the Project site. The Applicant will show a 30-foot-wide trail easement along the west side of the property, which is shown on the proposed Tentative Subdivision Map (see Figure 2).

STAFF RECOMMENDATION:

City Staff would like feedback from the Trails Committee on the Applicant's proposed development as it pertains to implementing the City's bicycle and trails requirements.

Figure 2 - Project Site





TRAILS COMMITTEE STAFF REPORT
November 15, 2021



PROJECT: BIKE MAP UPDATE
LOCATION: City-wide
STAFF: Carrie Whitlock, Strategic Planning and Innovation Program Manager
Lupe Murrietta, Graphic and Multimedia Program Manager

INTRODUCTION / BACKGROUND:

The current City Bike Map was last updated in 2015 following the adoption of the 2014 Bicycle, Pedestrian, and Trails Master Plan. With the update to the Bicycle, Pedestrian, and Trails Master Plan adopted in 2021, the map has been updated to reflect current conditions and priorities. The Map is useful to pedestrians and cyclists to identify current locations of off-street trails and bikeways to navigate the City. In addition, it identifies points of interest, and provides information on trail etiquette and bike safety.

The draft Map was brought to the Trails Committee on July 19, 2021 for initial review and input. The updates have now been completed, with the input from the Committee, City staff, and CSD. The input included:

- Ensuring Points of Interest were updated and accurate on the map;
- Emphasizing the 15mph speed limit in the Etiquette section;
- Adding a QR code;
- Including both existing and future trails and bikeways on the map;
- Adding new park destinations;
- Ensuring up to date with latest construction; and
- Updating contact information.

Staff recommendation:

City Staff would like final feedback from the Trails Committee on the final draft of the update to the Bike Map.

Attachments:

1. Trails Map Draft



CITY OF
ELK GROVE



TRAILS MAP

35 miles of trails for walkers,
runners and bicyclists.



• ELK GROVE •
CONTACT NUMBERS

Emergencies:

911
Report Bike Theft: 916.714.5115

Information about trails:

City of Elk Grove	916.691.CITY (2489)
CSD Parks & Recreation	916.405.5600
California State Parks	916.988.0205
Sacramento County	916.875.6961
CSD Parks	
Maintenance Hotline	916.405.5688

Ask Elk Grove:

City Information Line	(916) 691-CITY (2489)
TTY/TDD	(888) 435-6092
TTY/TDD (California Relay)	711

LEGEND

- Class I Off Street
- Future Class I
- Class II Bike Lane
- Future Class II
- Class III Bike Route
- Future Class III
- Class IV Separated Bikeways
- Future Class IV
- Retail/Shopping
- Park & Ride
- Public Restrooms
- Schools
- Parks
- Water Bodies

- Bike Shops**
- Elk Grove Bike Shop 1 (C-3)
- Elk Grove Cyclery 2 (C-3)

- Points of Interest**
- RECREATION**
- Elk Grove Bike Park 1 (C-3)
- Wackford Community Center 2/3/20 (B-2)
- Skate Park 2/3/20 (B-2)
- Jerry Fox Swim Center 4 (C-3)
- Del Meyer Park Trailhead & Staging Area 5 (C-2)
- Bartholomew Sports Complex 6 (B-3)
- Valley Hi Country Club 7 (B-2)
- Emerald Lakes Golf Course 8 (D-4)
- Aquatics Center & Commons 9 (C-3)
- Old Town Plaza 10 (D-3)
- Derr-Okamoto Skate Park 11 (D-3)

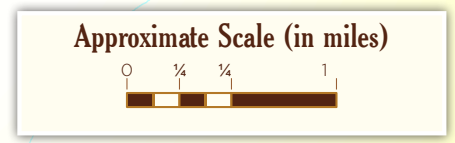
- NATURE**
- Elk Grove Rain Garden Plaza 12 (C-2)
- Longleaf Wildlife Viewing Area 13 (C-2)
- Stone Lake National Wildlife Preserve 14 (A-3)
- Community Garden 15 (D-3)
- Camden Lake Greenbelt 16 (C-2)
- Oasis Park 17 (C-3)
- Lichtenberger Park Rose Garden 18 (B-2)
- The Preserve 19 (C-3)

- COMMUNITY CENTER**
- Wackford Community Center & Aquatic Complex 2/3/20 (B-2)
- Laguna Town Hall 21 (A-2)
- Elk Grove Teen Center 22 (D-3)
- District56 23 (C-3)
- Senior Center/Veterans Hall 24 (C-3)

- EDUCATIONAL**
- Elk Grove Library 25 (D-3)
- Franklin Community Library 26 (B-3)
- Elk Grove Hotel and Stage Shop Museum 27 (C-3)

- PUBLIC SERVICES**
- US Post Office (Williamson Dr.) 28 (C-2)
- US Post Office (Bruceville Rd.) 29 (B-2)
- Dignity Health Medical Campus 30 (C-3)
- Sutter Medical Plaza 31 (C-2)
- Kaiser Medical Office 32 (D-4)
- Kaiser Medical Office 33 (C-2)
- UCD Medical Group 34 (C-2)

- GOVERNMENT FACILITY**
- CSD Parks & Recreation 35 (C-3)
- City Hall/Elk Grove Police 36 (C-2)
- Sacramento County Sheriff 37 (D-2)
- Special Waste Collection Center 38 (D-4)





ELK GROVE'S
FEATURED TRAILS

The City of Elk Grove is home to more than 35 miles of trails for walkers, runners and bicyclists. Our unique and extensive trail system meanders throughout open space, green belts, creeks and wildlife habitats, while connecting to award-winning parks, schools, neighborhoods and retail shopping centers. The interconnected trail system, maintained by the City and CSD, also promotes access to a network of bike lanes, providing alternative transportation opportunities in Elk Grove and throughout the region.

Franklin Creek Trail

The East Franklin, Poppy Ridge, and Laguna Ridge neighborhoods along Franklin Creek are home to the nearly ten-mile-long, paved Franklin Creek Trail - one of the City's newer trails that boasts some of the highest use and rich connections to other community amenities.

Foulks Ranch/Laguna Greenbelt

In the Foulks Ranch and Laguna Creek West subdivisions, from Kilconnel Drive to Laguna Woods Drive, winds another of Elk Grove's notable trails - the Foulks Ranch/Laguna Greenbelt. Nearly 1.6 miles of paved greenbelt and park walkways for walking, running, jogging, skating and biking allow trail users access to parks and playgrounds, athletic fields and open spaces, schools and shopping centers. Lichtenberger, Batey, Kloss and Pedersen Parks are all within easy access of the Foulks Ranch/Laguna Greenbelt, as are four shopping centers.

Laguna Creek Trail

Making its way from White Peacock Way to Waterman Road through the center of Elk Grove, the popular Laguna Creek Trail features over four miles of paved, off-street trails for biking, running, horseback riding or just a leisurely stroll. One of our most scenic trails, every section is teeming with diverse and plentiful vegetation and wildlife - from the Swainson's hawks and blue herons to popcorn flowers and tules. The Laguna Creek Trail provides easy access for students at Elk Grove Elementary. Laguna Creek Trail offers access to Old Town Elk Grove, Camden Lake, and many shopping and dining centers.

BICYCLE SAFETY

When enjoying outdoor activities like bicycling, community members are encouraged to reacquaint themselves with bicycle safety rules that will help make their rides safer and more enjoyable.



Always Wear an Approved Bicycle Helmet

A bicycle helmet should sit low on the forehead, just above the eyebrows. It should fit snugly and the two side plastic pieces on the straps should fit just under the ears. The buckle should be just under the chin, with one finger's width of space between the strap and chin. The helmet must always be buckled while riding. The helmet should not move more than 1/2 inch in any direction.



Know and Follow the Rules of the Road

Know and follow the rules of the road contained within the California Vehicle Code (CVC). Vehicle Code handbooks can be obtained through your local Department of Motor Vehicles Office. Remember, bicyclists must obey the same laws as drivers of motor vehicles.

Ride with the Flow of Traffic

Always follow lane markings and use appropriate hand signals. Ride single-file when in heavily congested areas.

Avoid Riding at Night

If it becomes necessary to do so, wear light-colored or reflective clothing. Make sure your bicycle is properly equipped with reflectors and a front light, if possible.

Be Alert While Riding

Watch for cars, pedestrians, and hazards in the roadway like potholes, drain grates, etc. Don't assume other people will yield to you. Be courteous and give the right-of-way to other bicycles and pedestrians.

When Using a Crosswalk Walk Your Bike

Always look left, right, then left again—even when the light gives you the right-of-way.

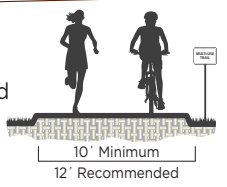


TRAIL TYPES & ETIQUETTE



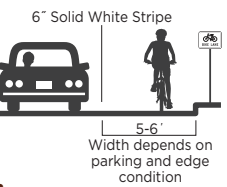
Class I Off Street:

For cyclists, pedestrians and non-motorized vehicles. Family friendly.



Class II Bike Lane:

Are striped lanes for one-way bike travel on a street or highway.



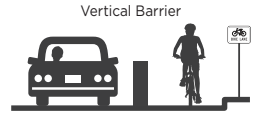
Class III Bike Route:

Streets where bicycles share the road with autos, typically on roads with fewer cars and lower speeds.



Class IV Separated Bikeways:

Streets where bicycles and vehicles are separated by a vertical element or barrier.



Class I Trail Etiquette

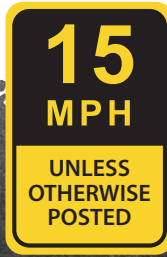
Be mindful of other trail users. Keep pets on a leash and dispose of pet waste and litter in designated receptacles.

Wheeled Devices:

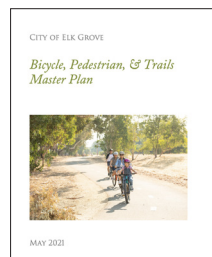
- Yield to pedestrians and announce your approach
- Ride at a safe speed; 15 mph unless otherwise posted
- Maintain single file in congested conditions
- Take caution of vehicle crossings
- Only self propelled or electric devices, no gas powered, are allowed on trails
- Only single width devices

Pedestrians:

- Watch for other trail users
- Keep walking party and strollers to half the width of the trail
- Utilize shoulder areas where provided



TRIP TIPS



Trails Master Plan

View standards & future trails

Scavenger Hunt

Download and enjoy on a trail!



Scan to view Trails Master Plan or download scavenger hunt.

Looking to get active and enjoy the great outdoors? Visit our **Getting Around Elk Grove** section of the website and use these online tools to help you get started! elkgrovecity.org/trails